

# BONANZA G36

---



**Beechcraft**  
BY TEXTRON AVIATION



# AERONAUTICAL EXCELLENCE

In a category all its own, the BEECHCRAFT BONANZA G36 aircraft is a unique combination of high performance, functionality and class. Hailing from a long and prestigious flying pedigree, this stylish and powerful aircraft is backed by years of proven aviation expertise and excellence. Continued refinement and improvements have allowed the *Bonanza* G36 piston to reach new heights in comfort and capability.



Maximum Range  
**920 nm\***



Maximum Cruise Speed  
**174 ktas**



Maximum Occupants  
**6**



Useful Load  
**1,213 lb**



Takeoff Ground Roll  
**1,300 ft\*\***

# POWER AND FLEXIBILITY

## EXCEPTIONAL HANDLING

A flying pedigree and control feel that is special to the *Bonanza G36* aircraft.

## PROVEN AIRFRAME

From treatment for increased corrosion protection to strengthened glass, the *Bonanza G36* aircraft is designed for durability.

## DEPENDABLE VISIBILITY

LED lighting provides better visibility, less drag and reduced maintenance.

## EFFORTLESS LOADING

Large doors for easy passenger boarding and cargo loading.

## RUGGED LANDING GEAR

Heavy-duty retractable landing gear and large tires allow for operations on semi-prepared surfaces.

## EASY ACCESS

Preflight checks are simplified by large access doors to the engine on both sides, making maintenance quick and easy.

## AUTOMATIC COMFORT

Set-and-forget environmental control and standard air conditioning.

## SEATING FOR SIX

Configured to your specifications with ergonomic club seating for passenger comfort.

## INCREASED AUTOMATION AND MORE PROTECTION FEATURES

Standard *Garmin* GFC 700 digital autopilot with electronic stability and protection (ESP) and underspeed protection (USP).

## NEXT-GENERATION AVIONICS

*GARMIN* G1000 NXi avionics with new GI 275 electronic standby and GMC 707 autopilot control panel provide a brand-new cockpit interface.

## WEATHER CAPABILITY

An electrically heated, constant-speed propeller reduces ice buildup.

## POWERFUL RELIABILITY

The 300-hp, six-cylinder *CONTINENTAL AEROSPACE TECHNOLOGIES* engine allows you to climb at 1,120 fpm (341 mpm) and cruise at more than 170 kts.



SELECT YOUR STYLE FROM THREE LEATHER SEATING COLOR SCHEMES



Raven



Chelsea Grey



Camel

## COMFORT AND PRODUCTIVITY

With club seating and ample elbow room, the *Bonanza G36* aircraft offers a spacious and comfortable ride for you and five of your closest friends and colleagues. The cabin has many amenities like leather seats, powered headset jacks, dual USB ports, reading lights and climate-controlled individual air vents. The *Bonanza G36* piston allows you to bring the comforts of the conference room to the sky.



# COMMAND THE NEXT GENERATION

The *Bonanza G36* aircraft is powered by the latest technology in integrated cockpits, the *Garmin G1000 NXi* avionics. Managing the flight deck has never been easier with the new GMC 707 autopilot control panel. The new *Garmin GI 275* electronic standby lets you keep the classic look of your standby instruments while upgrading to a modern, sleek glass touchscreen display.

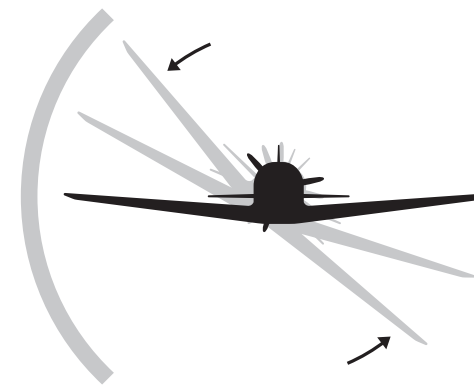
**G1000 NXi**



## FEATURES AND OPTIONS

- + ADS-B Out and In
- + Wireless database and flight plan loading
- + Integrated VFR sectional charts
- + IFR high and low charts with night mode
- + Digital audio panel with Bluetooth
- + Vertical situation display
- + Selectable visual approaches
- + Simplified maintenance
- + Optional SurfaceWatch for greater situational awareness

# SIMPLICITY AND PROTECTION



## GARMIN ELECTRONIC STABILITY AND PROTECTION (ESP) AND UNDERSPEED PROTECTION (USP)

The *Garmin GFC 700* autopilot features ESP and USP, providing pilots with an added measure of protection and correction. When a pilot exceeds user-selected pitch, roll or airspeed limitations, *Garmin* ESP and USP provide gentle movements on the flight controls to adjust the aircraft's pitch attitude or bank angle, adding a wide range of flight regimes.



## SATELLITE CONNECTIVITY

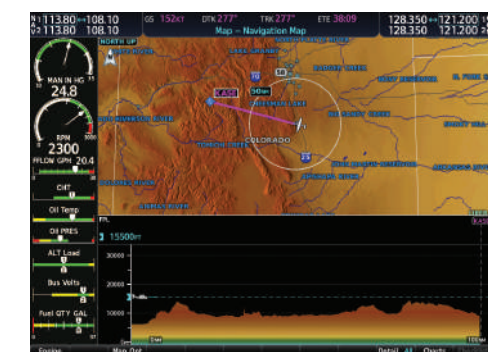
The *Garmin* CONNEXT Satellite— Iridium services option allows fully integrated weather, satellite phone and text messaging during your flight. Its automatic position reporting feature also enables friends and family to track you during your flight. A *Garmin Connex*t services subscription is required.



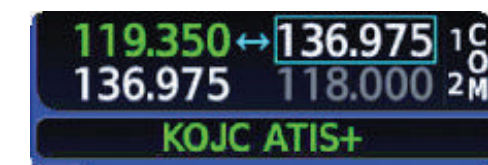
VFR Sectionals



IFR High and Low Charts



Vertical Situation Display



COM Frequency Decoding

## INDULGE YOUR APPETITE FOR ADVENTURE



Certified for utility use, the *Bonanza* G36 piston is a multitasker that can suit a variety of missions for up to six occupants, heavy cargo or combinations of both. Inside the cabin, enjoy the flexibility available with reconfigurable seating — the aft two seats can fold forward for easy access to your baggage compartment and fold up to provide more cabin floor space.





# EXTERIOR DESIGN SELECTION

Customize your *Bonanza G36* aircraft from a wide variety of paint schemes and color options to match your own unique style.

## SOLID



Gray



Castle Tan



Commercial Maroon



Wildcat Yellow



Rich Blue



Arista Blue



Jade Mist Green



Kelly Green



Gloss Black



Charcoal



Beechcraft Red



Calypso Orange



Beach Blue



Marlin Blue



Pilot Green

## PEARL



Titanium Pearl



Charcoal Gray Pearl



Black Pearl



CS Platinum Pearl 2



Oak Brown Pearl



Electric Red Pearl



Maroon Pearl



Dark Blue Pearl



Imperial Blue Pearl



Green Pearl



Cumulus Gray Pearl



Slate Gray Pearl



Dark Pine Pearl



Carter Gold Pearl



Las Vegas Gold



Dark Toreador Red Pearl



Medium Concord Pearl



Columbia Blue Pearl



Sky Blue Pearl



Topaz Green Pearl

*Paint swatch colors have been adjusted for print quality.*

# ADVENTURE AWAITS

The *Bonanza G36* aircraft boasts a long list of desirable features, luxurious amenities and state-of-the-art technology, but its history of performance and popularity, being the longest produced single-engine piston aircraft of all time, are what make it the leader in its class. With more than 4,000 Model 36 *Bonanza* pistons built to date, this aircraft is proven, fun to fly, comfortable to ride in and flexible for any mission. It is the perfect partner for your future adventures.



## BONANZA SPECIFICATIONS

### EXTERIOR

Wingspan	33 ft 6 in	10.21 m
Length	27 ft 6 in	8.38 m
Height	8 ft 7 in	2.62 m

### INTERIOR

Cabin Height	50 in	1.27 m
Cabin Width	42 in	1.07 m
Cabin Length	12 ft 7 in	3.84 m

### BAGGAGE CAPACITY

Weight	70 lb	31.75 kg
Volume	10 cu ft	0.28 cu m

### MAX OCCUPANTS

6

### WEIGHTS

Max Takeoff Weight	3,805 lb	1,726 kg
Empty Weight	2,605 lb	1,182 kg
Useful Load	1,213 lb	550 kg

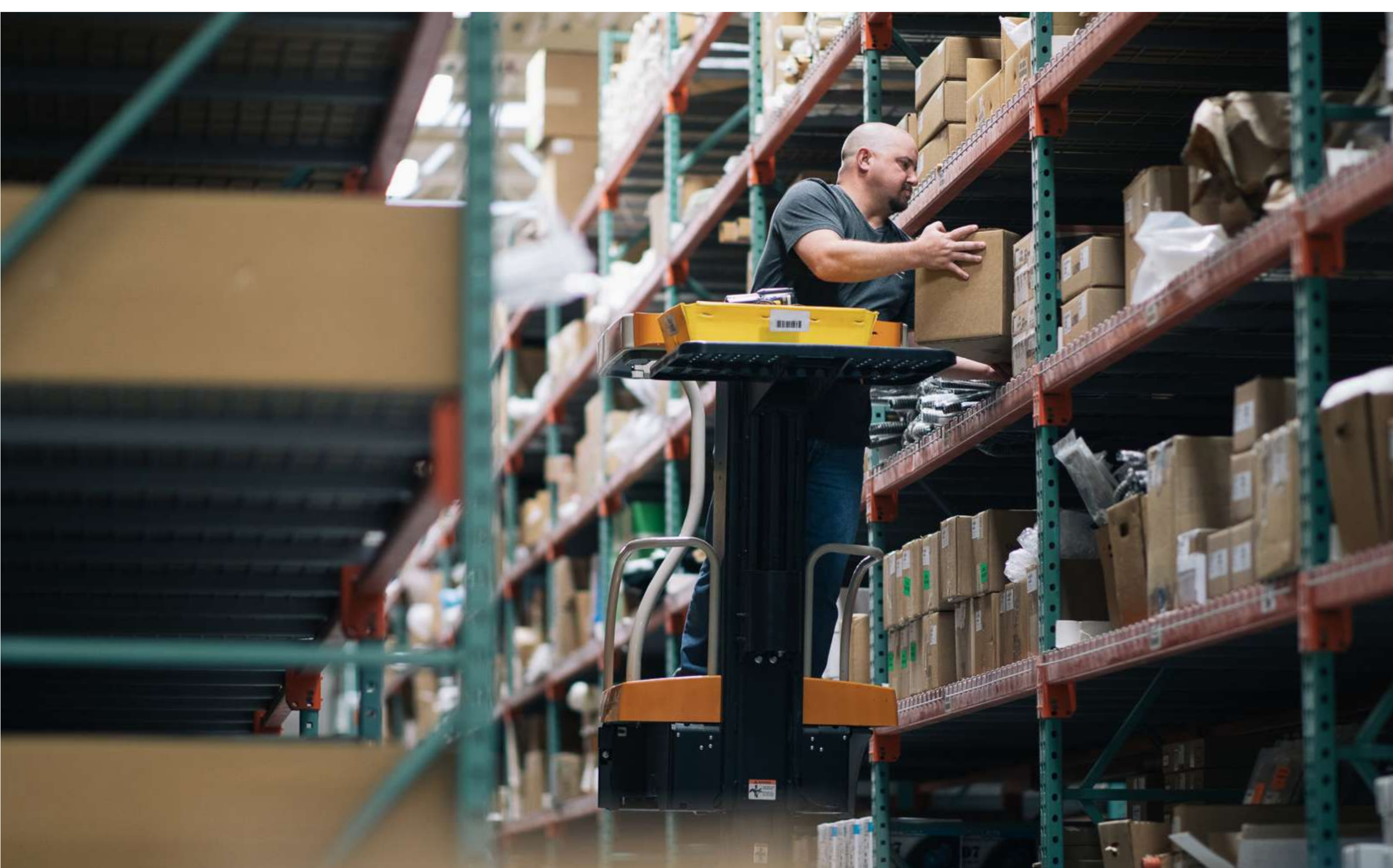
### POWERPLANT

Manufacturer	Continental Aerospace Technologies	
Model	IO-550-B	
Power Output	300 hp ea	224 kW ea

### PERFORMANCE\*

Max Cruise Speed	174 ktas	322 km/h
Max Range	920 nm	1,704 km
Takeoff Ground Roll	1,300 ft	396 m
Max Climb Rate	1,120 fpm	341 mpm

\* Performance data is based on standard conditions with zero wind. Field performance assumes a level, hard-surface, dry runway. Range is based on a ferry mission with one pilot at ECON power with IFR reserves.



# YOUR CONNECTION TO OEM EXPERT SUPPORT

---

Maintaining a global fleet requires worldwide coordination and universal access to the knowledge of experienced parts and sales support representatives. With you as our focus, we provide efficient and personalized service for you and your *Bonanza G36* aircraft with our global Textron Aviation Parts and Distribution support and sales teams. You can count on Textron Aviation to be by your side with superior parts availability, competitive pricing and a robust distribution system.

Success is a collection of parts. Choose them carefully.

## HIGHLIGHTS FROM OUR PARTS NETWORK

- Textron Aviation has the world's largest parts distribution network in general aviation.
- A robust E-Commerce platform to make parts purchasing quick and easy.
- A network of worldwide authorized service facilities to support your aircraft.
- Global product support teams standing by with technical support and advise.
- By using the OEM, you will receive parts employing the same standards and specifications used when your aircraft was built.

VISIT [PARTS.TXTAV.COM](https://parts.txtav.com) TO LEARN MORE.

# THE WORLD'S LEADER IN GENERAL AVIATION

---

We advance the market by leveraging the latest technology in our *Beechcraft* and *CESSNA* aircraft. These cornerstone brands account for more than half of all general aviation aircraft flying today.

We have delivered more than 250,000 aircraft over our 95 year history, exceeding 150 million turbine flight hours in over 170 countries. With more than 12,000 employees building new products and supporting you every step of the way, we continue to provide the industry's widest-ranging offerings and most capable service.

Our portfolio features *CITATION* aircraft, the world's best-selling business jets; *KING AIR* and *CARAVAN* aircraft, both class-leading turboprops; and advanced piston aircraft for transport and efficient pilot training.

LEADING PISTON AIRCRAFT  
**200,000 DELIVERIES**  
INCLUDING THE SKYHAWK AND BONANZA



CESSNA CARAVAN FAMILY  
**ULTIMATE UTILITY**  
MORE THAN 2,900 DELIVERED



KING AIR SERIES  
**OVER 7,700 BUILT**  
TRULY VERSATILE



CITATION CJ FAMILY  
**MOST DELIVERED**  
OVER 2,300 LIGHT JETS IN SERVICE



CITATION LATITUDE  
**#1 BEST-SELLING**  
MIDSIZE BUSINESS JET



THERE'S ONLY ONE AIRCRAFT THAT  
**DELIVERS IT ALL**  
CITATION LONGITUDE





U.S. **+1.844.44.TXTAV** | INTERNATIONAL **+1.316.517.8270** | **BEEHCRAFT.COM**

© 2022 Textron Aviation Inc. All rights reserved. BEEHCRAFT, BONANZA, CESSNA, CITATION, KING AIR and CARAVAN are trademarks or service marks of Textron Aviation Inc. or an affiliate and may be registered in the United States or other jurisdictions. GARMIN, GFC, G1000, CONNEXT and CONTINENTAL AEROSPACE TECHNOLOGIES are trademarks or service marks of others.

Optional equipment may be shown.

BROCH-PIST-G36-0422